

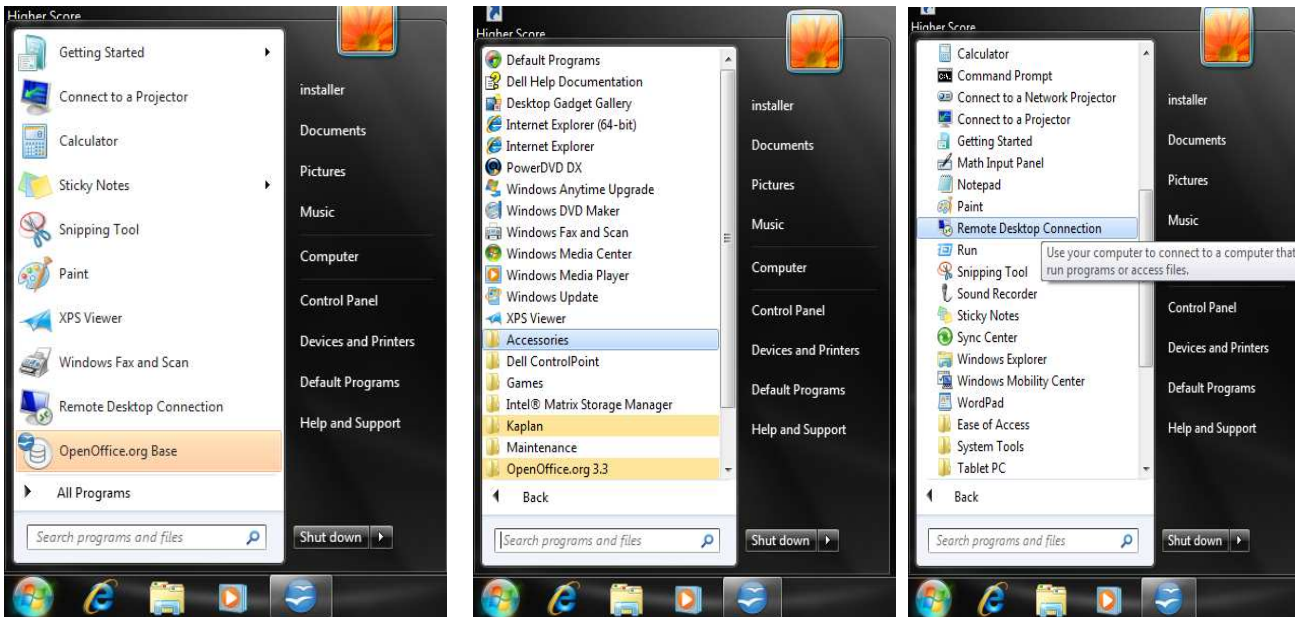


Connection from outside of the Hornell CSD Network Tutorial

Windows VISTA and 7 Users:

1. Open the start menu and within the search bar type “Remote Desktop Connection.”
2. Windows should automatically find the “Remote Desktop Connection” shortcut. Click on the “Remote Desktop Connection” shortcut.

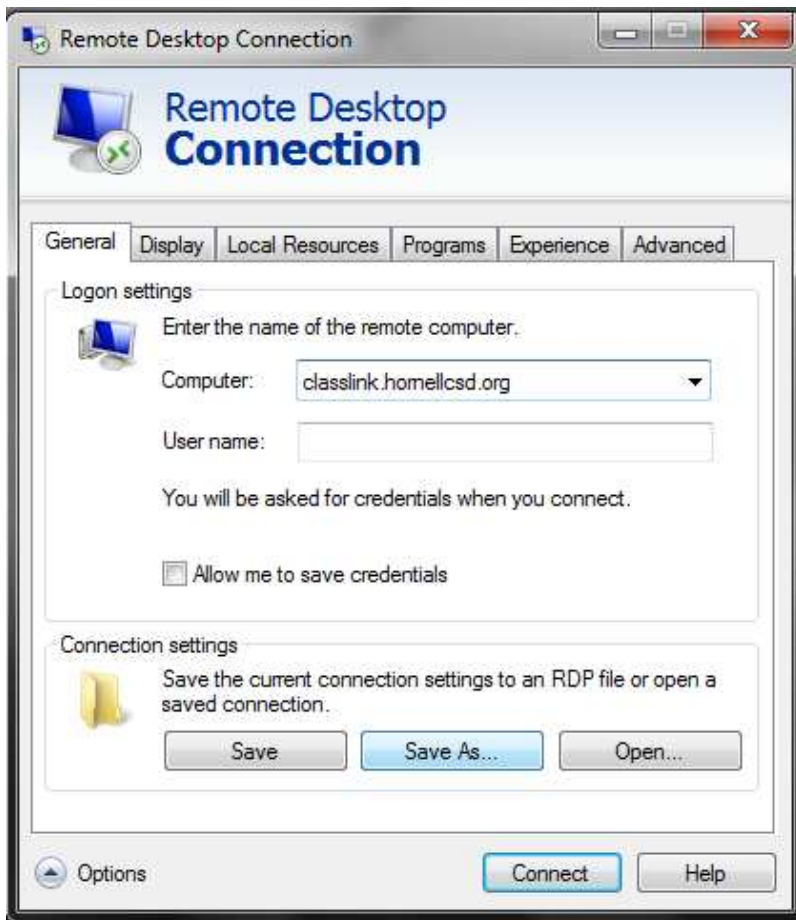
Note: If Windows does not automatically search for and find “Remote Desktop Connection,” manually find the shortcut by clicking “All Programs” at the bottom of the Start menu. Then navigate to the “Accessories” folder, and find the “Remote Desktop Connection” shortcut. Click on this shortcut.



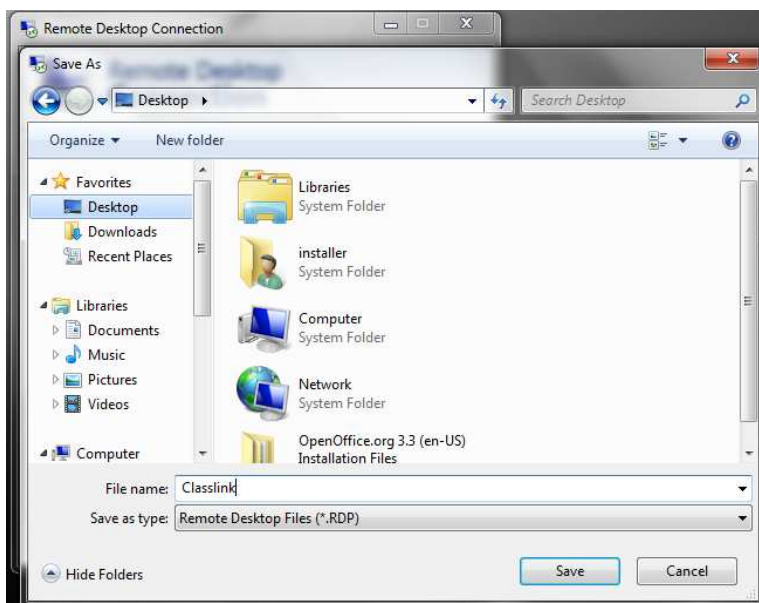
3. Once Remote Desktop Connection has been opened, enter **classlink.hornellcsd.org** into the “Computer” field.



- Click on the button "Options" and Click on the "Save As..." button.



- Rename the Remote Desktop Connection shortcut to something like "Classlink," and Save to Desktop.



6. Notice the newly created Desktop Icon. Double clicking this Icon should connect you to the Hornell Classlink System.

